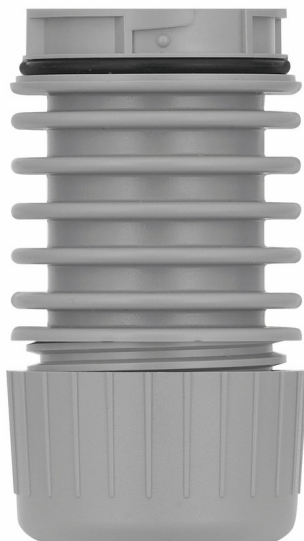


KombiSIGN 40 / DesignLOOK

## Adapter f. tube mount. RM GY



|           |              |
|-----------|--------------|
| Part No.: | 630.730.00   |
| Series:   | KombiSIGN 40 |



### MECHANICAL DATA

|                             |               |
|-----------------------------|---------------|
| Height                      | 80 mm         |
| Diameter                    | 40 mm         |
| Materials                   | PC            |
| Housing colour              | Grey          |
| Protection category         | IP66<br>IP69K |
| Cable entry                 | Through hole  |
| Cable entry maximum         | d = 9 mm      |
| Type of fixing              | Tube mounting |
| Working temperature minimum | -30°C         |
| Working temperature maximum | +60°C         |
| Weight with packaging       | 45 g          |
| Product weight              | 45 g          |

### ELECTRICAL DATA

|                  |   |
|------------------|---|
| Pollution degree | 3 |
|------------------|---|

### APPROVAL DATA

|                               |                                |
|-------------------------------|--------------------------------|
| Conforms with CE              | No                             |
| Conforms with RoHS directive  | Fulfills substance restriction |
| WEEE                          | No                             |
| Conforms with ATEX-directive  | No                             |
| Conforms with CCC             | No                             |
| Conforms with UL              | cULus                          |
| UL Type Rating                | Type 12                        |
| Conforms with FCC             | No                             |
| Conforms with IC              | No                             |
| EAC certificate available     | Yes                            |
| Conforms with UKCA (Importer) | No                             |
| Conforms with CMIM            | No                             |
| Conforms with AS-I            | No                             |
| ICAO Certification            | No                             |
| Conforms with DNV             | No                             |
| Conforms with RoHS CN         | No                             |
| Conforms with VdS             | No                             |

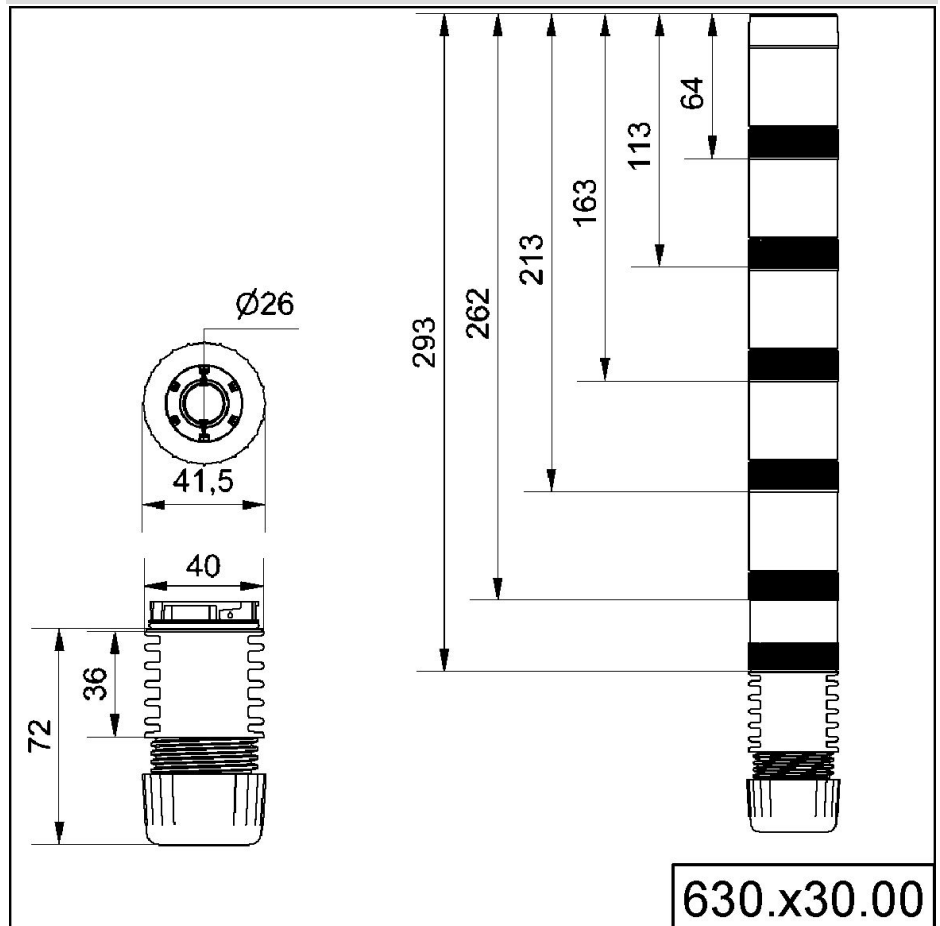


For additional installation and mounting information, refer to the appropriate user guide at [www.werma.com](http://www.werma.com). This printed copy is for information only and is subject to alteration.

KombiSIGN 40 / DesignLOOK

**Adapter f. tube mount. RM GY**

**DRAWING**



For additional installation and mounting information, refer to the appropriate user guide at [www.werma.com](http://www.werma.com). This printed copy is for information only and is subject to alteration.