

Installation / LED/Buzzer with acknowledgement function

## AS-i LED/Buzzer EM Contin. tone 30VDC RD



Part No.: 450.110.55



### MECHANICAL DATA

Height	81 mm
Diameter	50 mm
Materials	PC PC/ABS
Dome colour	Red
Housing colour	Black
Protection category	IP65
Connection	Screw terminals
cross-sectional area maximum	1,50mm <sup>2</sup> / 16AWG
Type of fixing	Built-in mounting
Working temperature minimum	-20°C
Working temperature maximum	+50°C
Weight with packaging	57 g
Product weight	41 g

### ELECTRICAL DATA

Operating voltage	18,5 - 31,6V (ASI)
Operating voltage type	DC
Rated operational current	80 mA
Rated inrush current	500 mA
Protection class	Protection class 2
Pollution degree	3 In the connection area: 2
AS-i Slave Type	A/B
AS-i Profile	S-B.A.E
connectivity	AS-Interface

### OPTICAL DATA

Light source	LED
Light colour	Red
Optical signal image	Permanent
Service life optical	50,000 h maximum

### ACOUSTIC DATA

Volume (max) at 1m distance	80,0 dB (A)
Acoustic signal image	Continuous tone
Audio frequency	2800 Hz
Acoustic service life	5,000 h minimum

### APPROVAL DATA



For additional installation and mounting information, refer to the appropriate user guide at [www.werma.com](http://www.werma.com). This printed copy is for information only and is subject to alteration.

Installation / LED/Buzzer with acknowledgement function

## AS-i LED/Buzzer EM Contin. tone 30VDC RD

Conforms with CE	Yes
Conforms with RoHS directive	Yes
WEEE	Yes
Conforms with ATEX-directive	No
Conforms with CCC	No
Conforms with UL	cULus
UL Type Rating	Type 12
Conforms with FCC	No
Conforms with IC	No
EAC certificate available	Yes
Conforms with UKCA (Importer)	Yes (WERMA (UK) Ltd.)
Conforms with AS-I	Yes
ICAO Certification	No
Conforms with DNV	No
Conforms with RoHS CN	No
Conforms with VdS	No

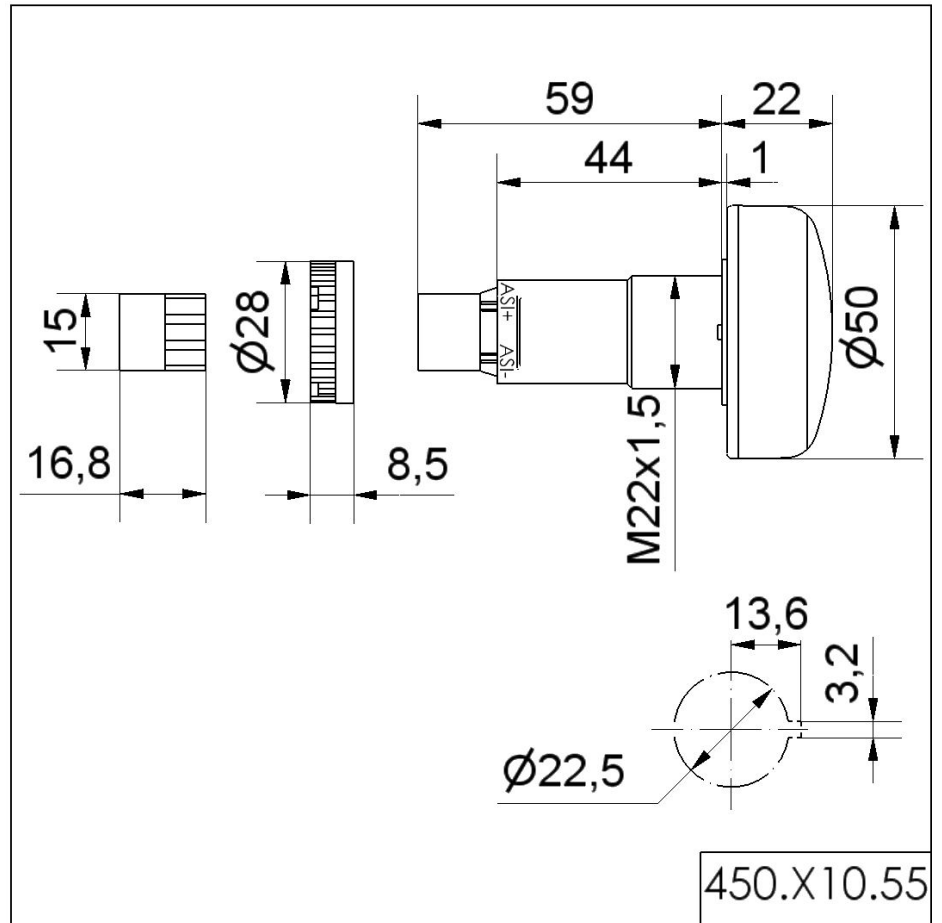


For additional installation and mounting information, refer to the appropriate user guide at [www.werma.com](http://www.werma.com). This printed copy is for information only and is subject to alteration.

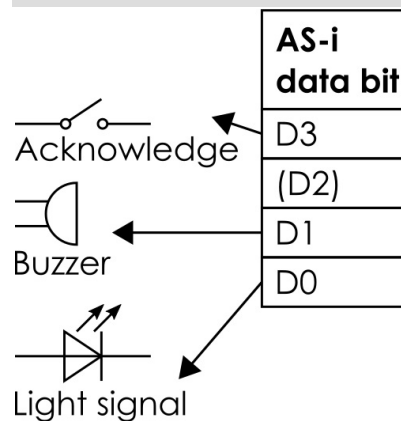
## Installation / LED/Buzzer with acknowledgement function

## AS-i LED/Buzzer EM Contin. tone 30VDC RD

## DRAWING



## TERMINAL ASSIGNMENT



<b>Supply (BUS/AUX)</b>	BUS
<b>Master profile</b>	min. M3



For additional installation and mounting information, refer to the appropriate user guide at [www.werma.com](http://www.werma.com). This printed copy is for information only and is subject to alteration.